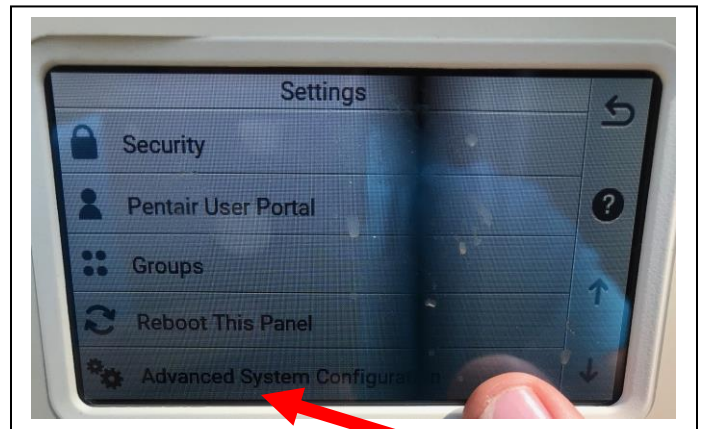


## How To Reboot WIFI Antennae on Intellicenter Pool Controls – Allison Pools

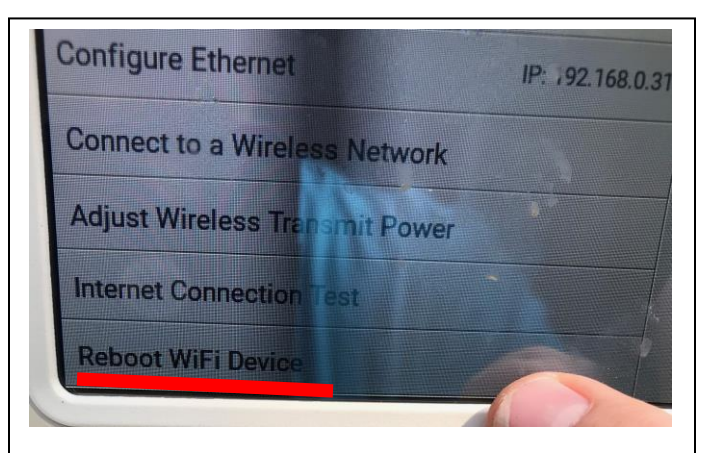
### 1. Push “Settings” Button on Pool Controller



### 2. Scroll Down to “Advanced System Configuration” and Select



### 3. Select “Network and WiFi Setup” Then Select “Reboot WiFi Device”



After a couple of minutes you should be able to connect to your Intellicenter Controller.

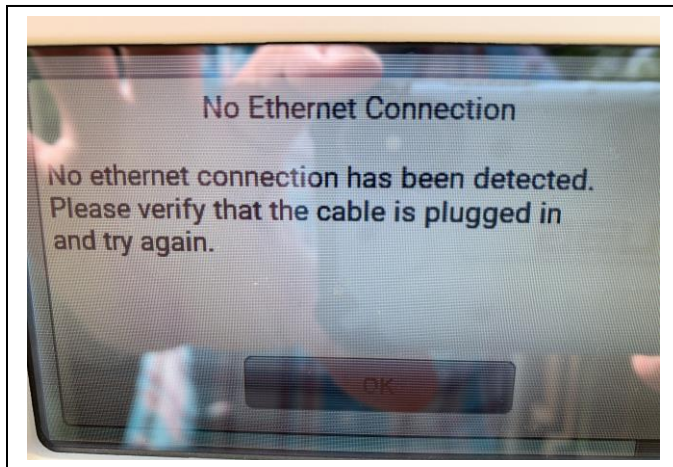
You can also try flipping breaker to pool controller and rebooting the complete controller.

Look at 2<sup>nd</sup> page to Reboot Panel.

If that does not work please call 903-465-6073 for a service call.

## “No Ethernet Connection” Error on Intellicenter Pool Controls – Allison Pools

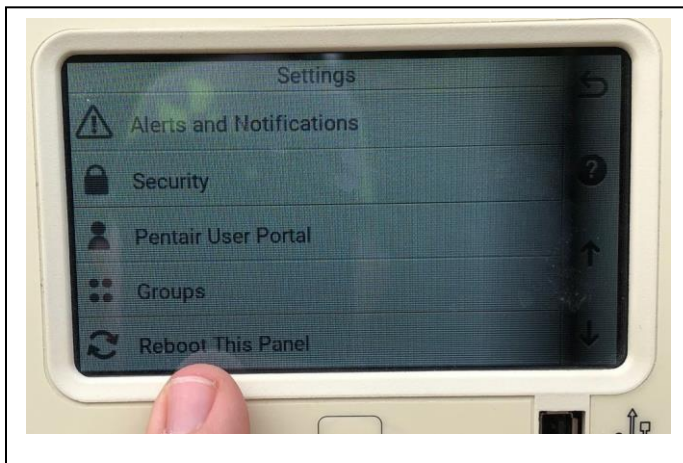
If you have the “No Ethernet Connection” error. Do the following steps below:



1. Push “Settings” Button on Pool Controller



2. Scroll Down to “Reboot This Panel” and Select



3. It will take a few minutes to Reboot and come back on-line and connect to WIFI.

If it does not, please call Allison Pools office for Service – 903-465-6073